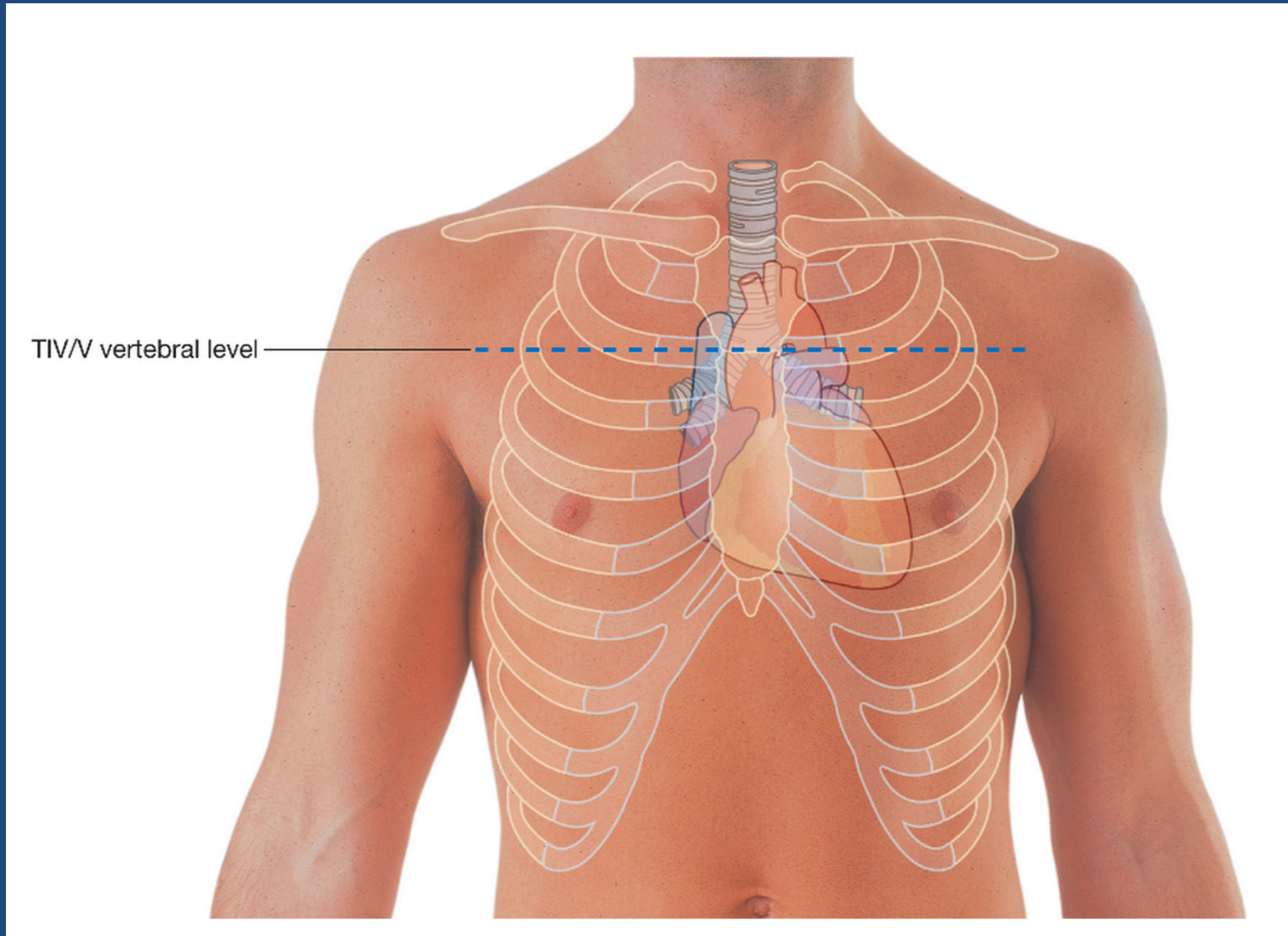




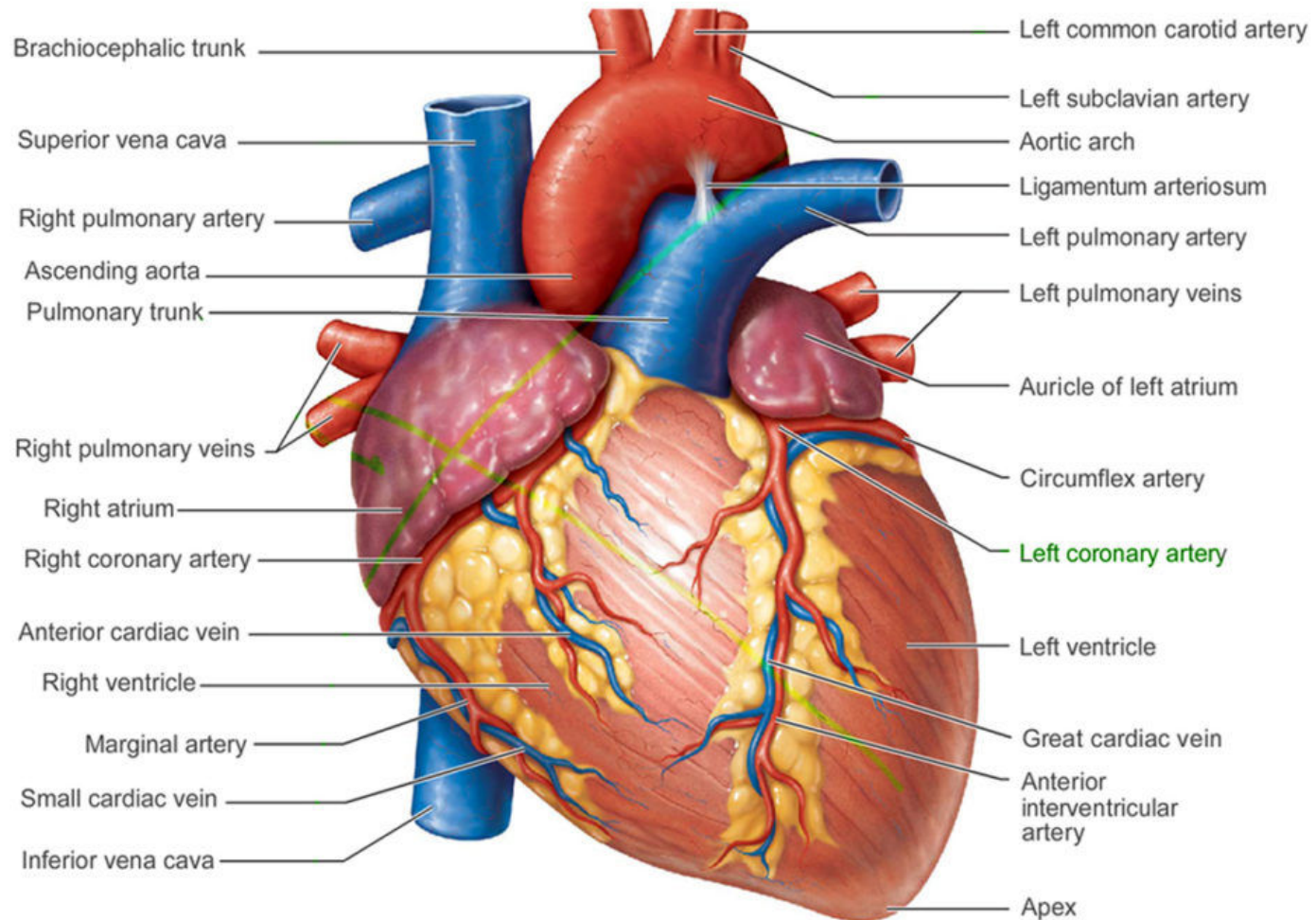
# External features of the heart and its blood supply

Dr. Rowayda Mohamed

# Position of the heart

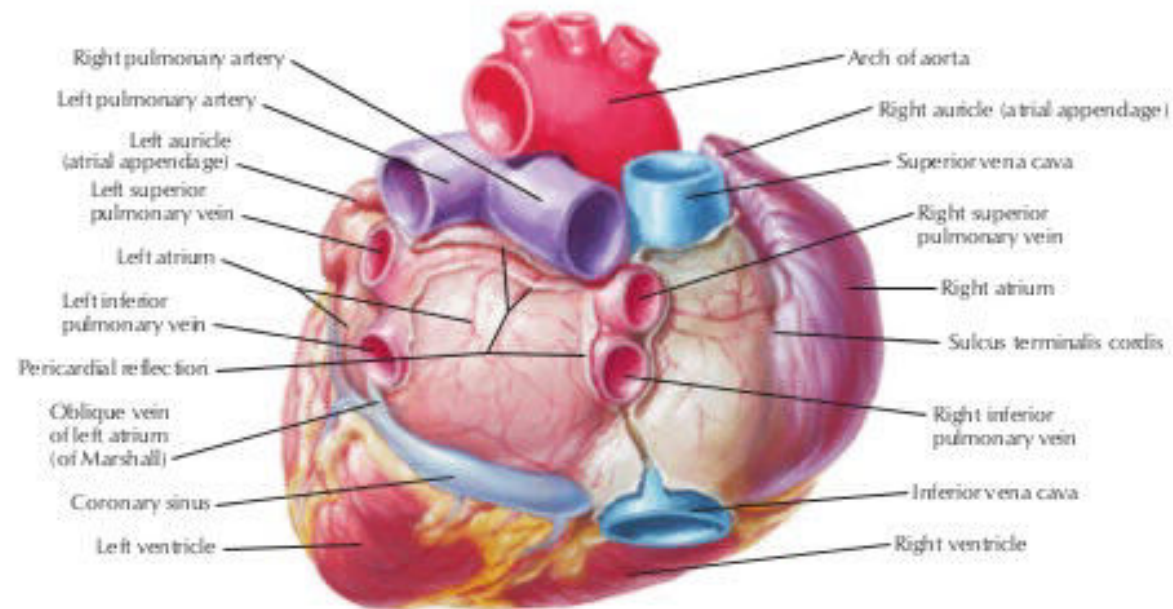


# Sternocostal surface

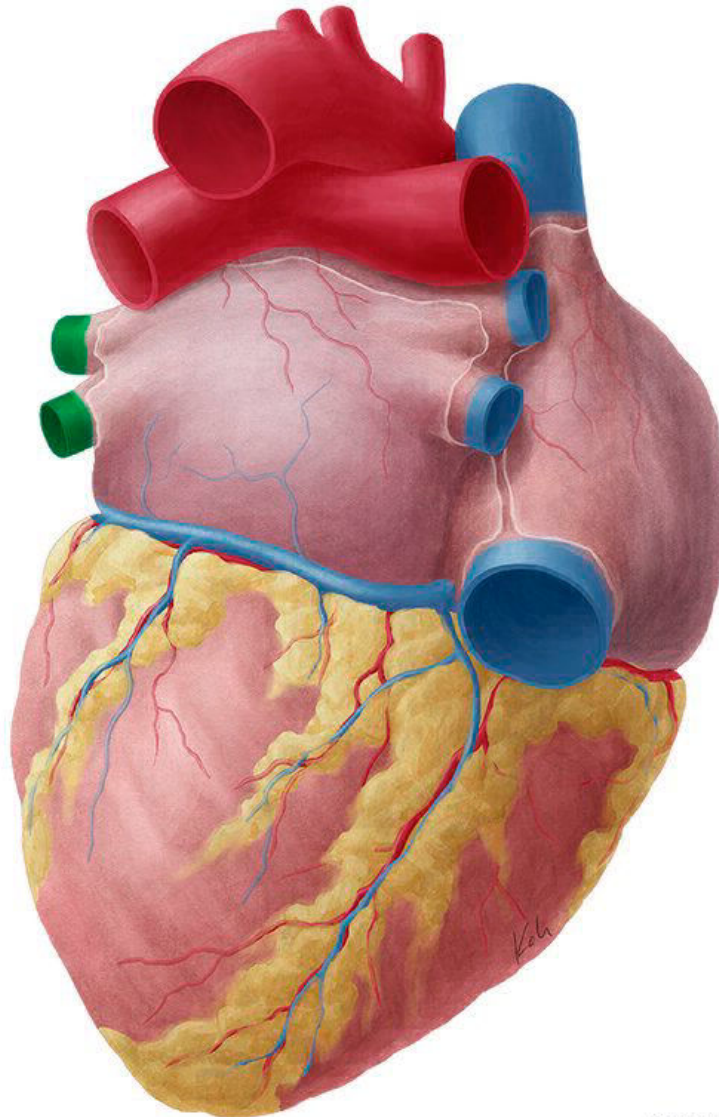


# Base of the heart

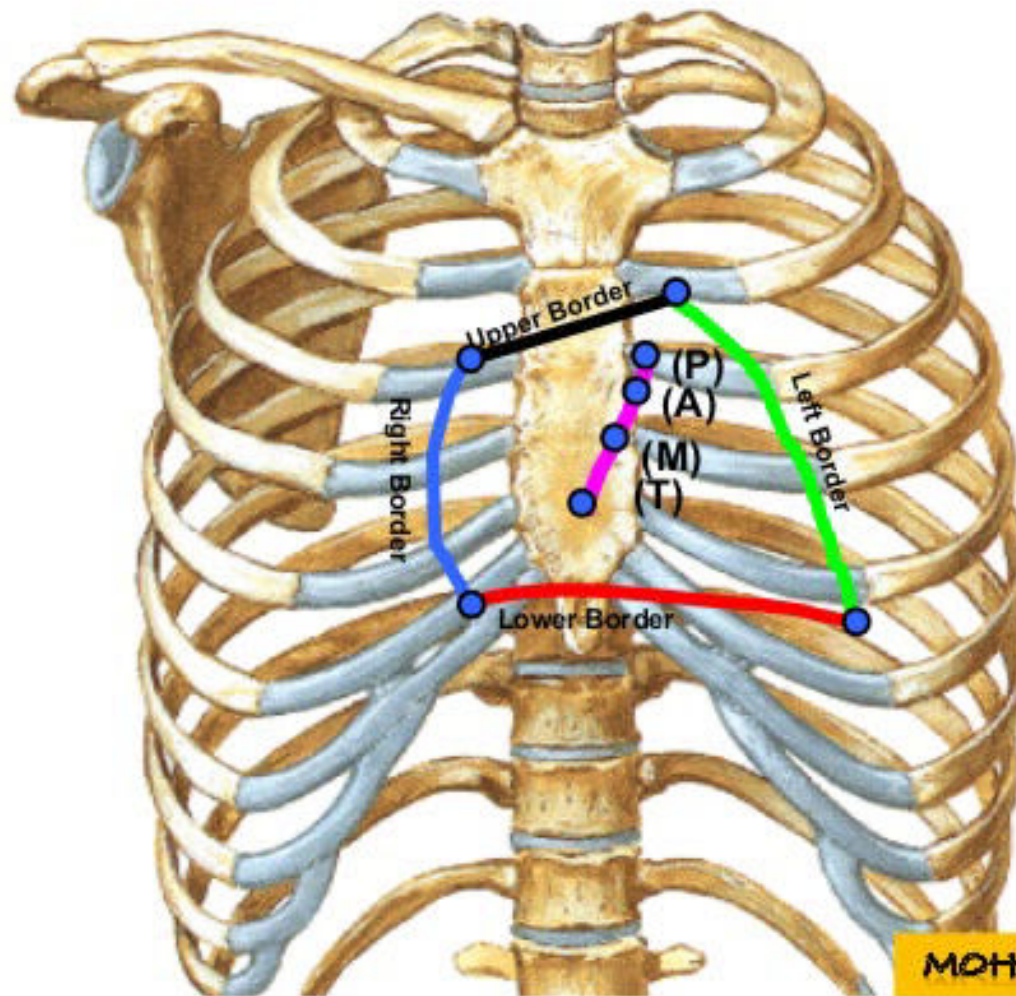
## Base



# Diaphragmatic surface



# *Surface Anatomy of the Heart*



A- Borders

B- Apex

C- Coronary  
Groove

D- Valves

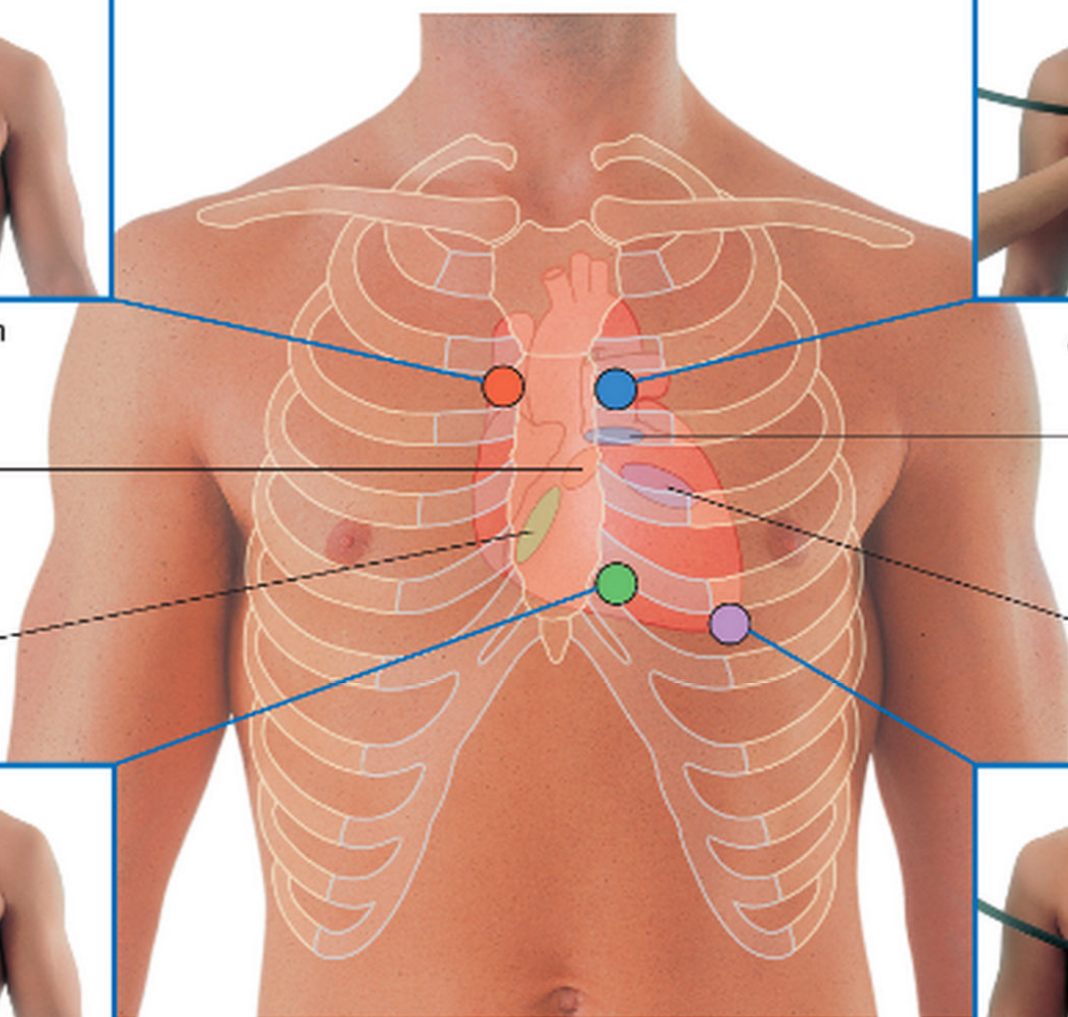
MOHAMED EL FIKY



Auscultation position  
for aortic valve



Auscultation position  
for pulmonary valve



Aortic valve

Pulmonary valve

Tricuspid valve

Mitral valve

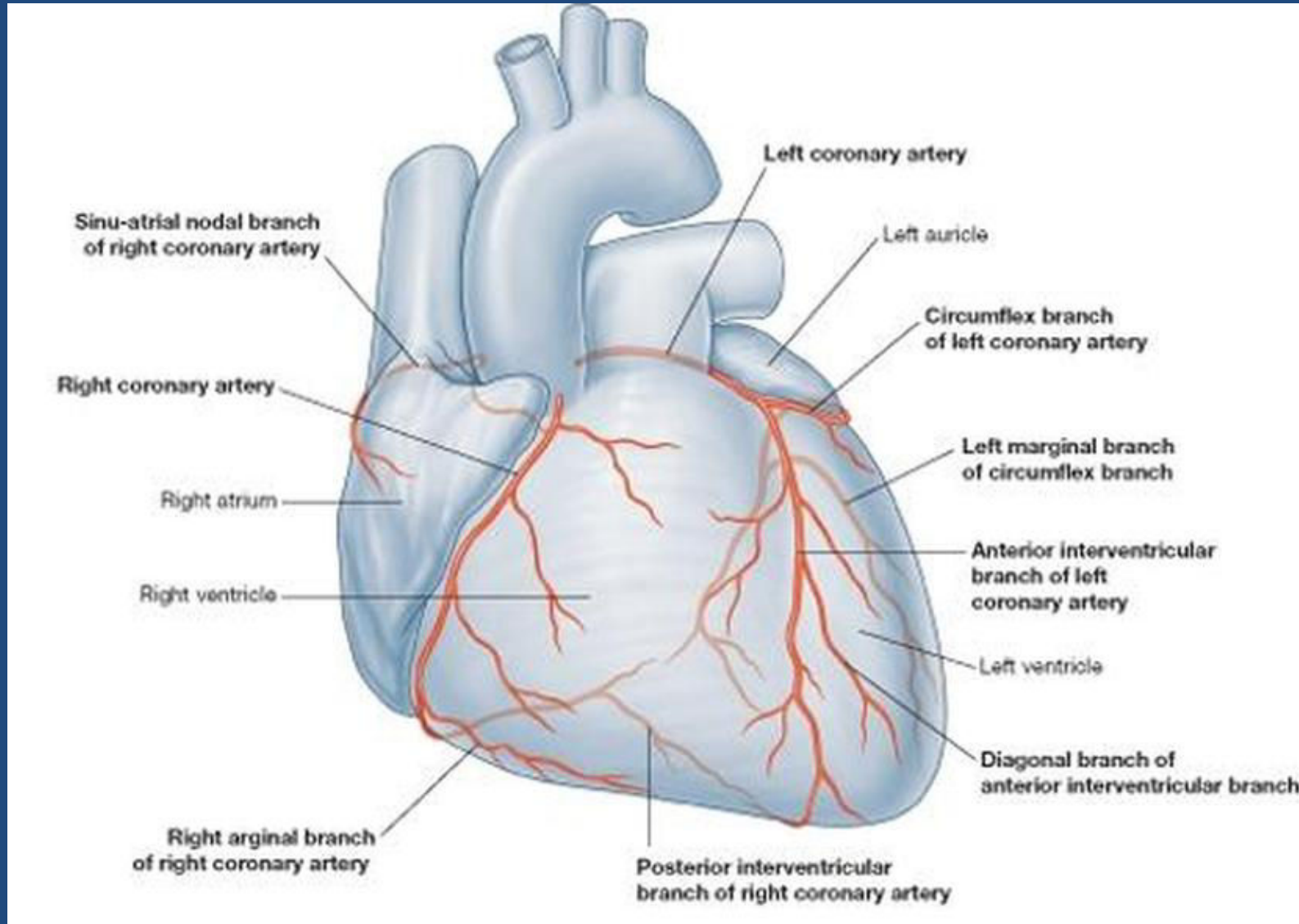


Auscultation position  
for tricuspid valve



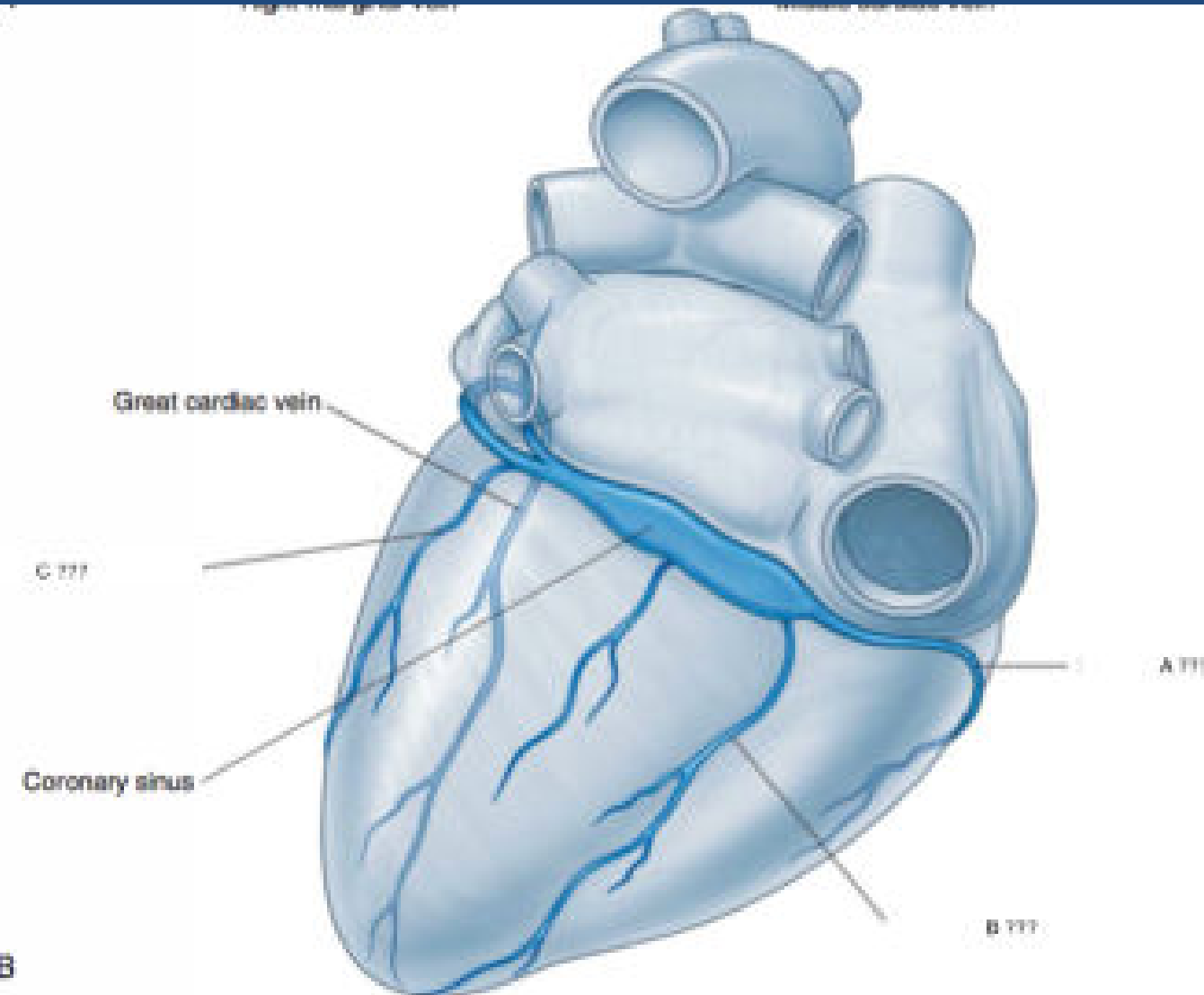
Auscultation position  
for mitral valve

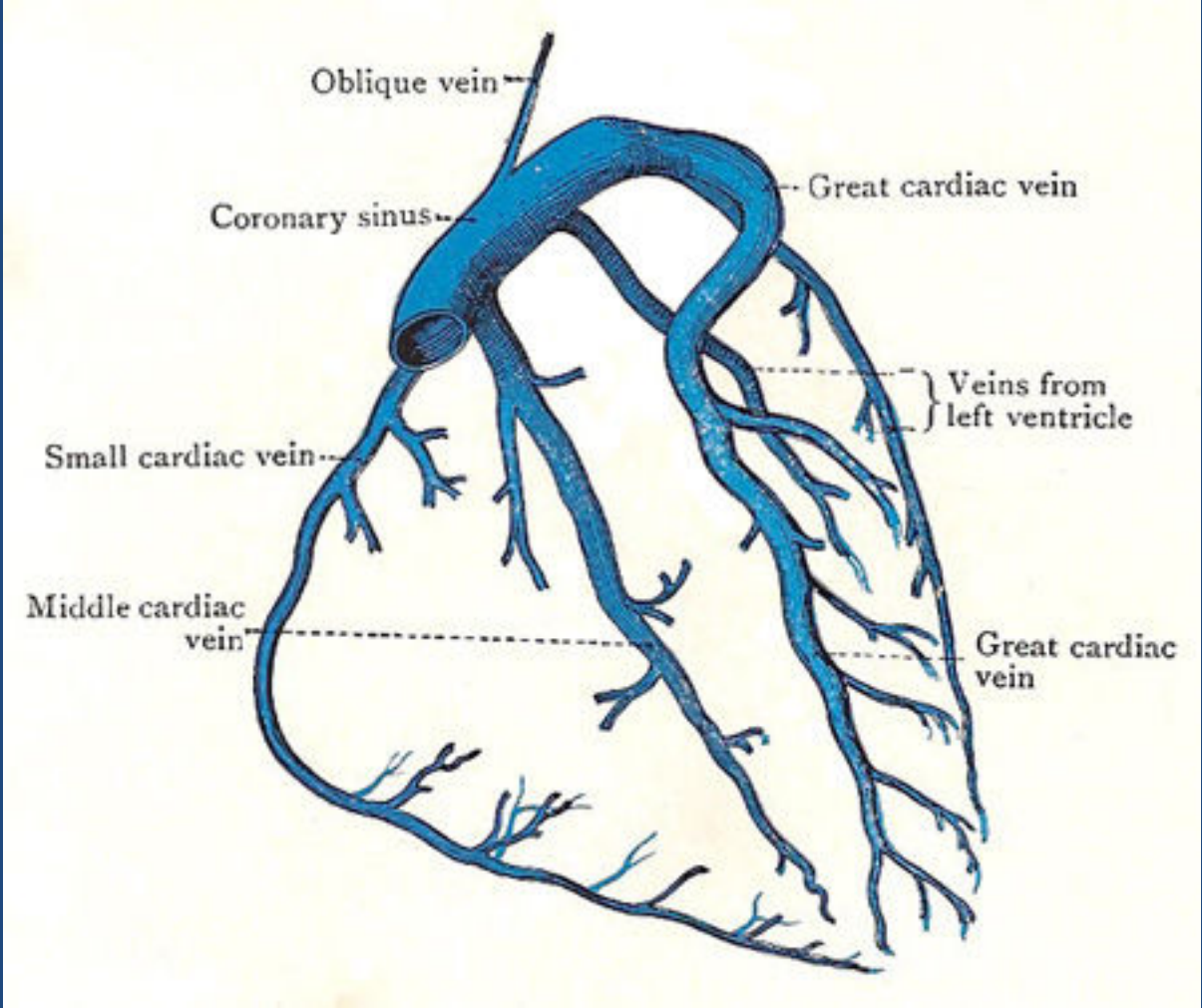
# Arterial supply of the heart





# Venous drainage of the heart





1. Concerning the apex of the heart, one of the following is correct:

- a. It is directed downward, backward and to the left.
- b. It is directed downward, backward and to the right.
- c. It lies opposite the 6<sup>th</sup> intercostal space.
- d. It lies opposite the 5<sup>th</sup> intercostal space.

## 2. The anterior interventricular groove contains:

- a. The circumflex branch of left coronary artery.
- b. The marginal artery.
- c. The great cardiac vein.
- d. The middle cardiac vein.
- e. The small cardiac vein.

### 3. The surface anatomy of the aortic valve is:

- a. The 3<sup>rd</sup> left rib at its sternocostal junction.
- b. The 3<sup>rd</sup> left space at sternal border.
- c. The 4<sup>th</sup> left rib at its sternocostal junction.
- d. The 4<sup>th</sup> space behind the body of the sternum.

#### 4. The pulmonary valve is heard at :

- a. The 2<sup>nd</sup> left space.
- b. The 2<sup>nd</sup> right space.
- c. The 5<sup>th</sup> left space.
- d. The xiphsternal junction.

5. The right border of the heart is formed of:

- a. The both ventricles .
- b. The left ventricle and left atrium.
- c. Both atria (mainly the right).
- d. The right atrium only.

*Thank you*